

*Creativity takes Courage  
Henri Matisse*

---

**cowra  
open space  
legacy  
public art mural  
project**

2021/2022

Expression of Interest Package



key  
details

**EOI Closing Date - Monday 6th December 2021**

**Closing Time - 4.30pm**

**Project Contacts - Kate Alberry / Dean Steward**

**Project Contact Phone - 6340 2047**

**Project Email - [dsteward@cowra.nsw.gov.au](mailto:dsteward@cowra.nsw.gov.au)**

**Project completion schedule - September 2022**

# table of contents



CH  
01  
02  
03  
04  
05  
06  
07  
08  
09  
10  
11  
12

PG  
02  
03  
04  
05  
14  
15  
16  
17  
19  
20  
21  
22

## acknowledgement of country

Cowra Council recognises Australia's First Nations Peoples as the original and continuing custodians of country in Australia at large, the state of NSW and the Wiradjuri peoples as the traditional custodians of country on which Cowra Shire Council boundaries lie.

Council pays respect to Elders past, present and emerging of the Wiradjuri Nation and extends that respect to other First Nations who are reading this document. The Wiradjuri People are important partners in the economic, social and environmental future of the Cowra Shire and we will continue to work together and increase collaboration.

# 01

Cowra Council has been successful in gaining grant funding for the commission of 4 murals on public infrastructure.

Cowra Council is seeking Expressions of Interest from suitable experienced artists who wish to create contemporary public artworks that will respond to the criteria and themes set out in this brief.

This commission will be awarded to individual artists or an artist that offers the best comprehensive approach to the opportunity outlined within this document and in accordance with the scoring criteria. Its noted that Council' s decisions in relation to the awarding the commission is final.



02

## a brief history of COWRA

The Wiradjuri People are the original custodians of land within the Cowra Shire and their history and connection to Country and community make a valuable contribution to our heritage, culture and identity. Cowra is said to have begun as a European settlement around 1849 when a small settlement at Coura Rocks was given as Government Survey. The first European explorer to the area, George William Evans, entered the Lachlan Valley in 1815, naming the area Warwick Plains. A military depot was established not long after at Soldiers Flat near present day Billimari. From the early 1830's, a European settlement known as Coura Rocks commenced near the river crossing. The township of "Coura Rocks" had its beginnings in 1844 and after being proclaimed a village in 1849, became known as Cowra. The first bridge of the Lachlan River was built in 1870. The first rail line from Sydney reached Cowra in 1886. The first telephone exchange was established in 1901. The town water supply was established in 1909, the gasworks in 1912 and town supplied electricity was introduced in 1924.

During World War II, Cowra was the site of a prisoner of war (POW) camp. The camp was home to Japanese, Italian, Korean, Indonesian, Formosan and Taiwanese personnel. On 5 August 1944, 1,104 Japanese POW's attempted a mass breakout from the Camp, during which 231 Japanese died and 108 prisoners were wounded. The events of the Cowra Breakout has helped Cowra Shire develop close historical ties to Japan and both residents and visitors may notice these important links through the Avenue of Cherry Trees; The Cowra Japanese Garden; The War Cemetery; and the Sakura Matsuri Festival. Cowra has also developed a strong relationship with Indonesia and Italy because of the large number of Prisoners of War in the town during WWII. Cowra now prides itself on its commitment to reconciliation and tolerance and promotes such events as the annual Festival of International Understanding which celebrates a different guest nation each year.

Cowra is also home to Australia's World Peace Bell, made from melted down coins donated by 106 member countries of the United Nations. The decision to locate Australia's World Peace Bell in Cowra is a testament to our long-standing contribution to world peace and international understanding. Recognised by the World Peace Bell Association in 1992, the bell is proudly housed in Cowra's Civic Square.

# 03

our shire our shire our shire our shire our shire

Cowra Shire covers an expansive area of 280,960 hectares and is located in the fertile Lachlan Valley of Central West NSW. The Shire is a strong, vibrant, diverse and resilient community - home to a stable population base of 12,767 people. About 8,300 residents live within the township of Cowra, which is the heart of the Shire and focus of commercial, civic and recreation activity. There are eight outlying village settlements (Gooloogong, Woodstock, Wyangala, Darbys Falls, Wattamondara, Billimari, Morongla, and Noonbinna), all of which have their own unique identity. Collectively they are important contributors to the character and social well-being of the whole Shire. Cowra Shire is bounded by the Cabonne and Blayney Shire Council areas in the north, the Bathurst Regional Council area in the east, Upper Lachlan Shire and Hilltops Council area in the south, and Weddin Shire and Forbes Shire areas in the west.





**04**

artist artist artist artist artist  
ef brief brief brief brief

the 4x  
artwork  
locations  
the 4x  
artwork  
locations  
the 4x  
artwork  
locations  
the 4x  
artwork  
locations  
the 4x  
artwork  
locations  
the 4x  
artwork  
locations  
the 4x  
artwork  
locations



WATER RESERVOIR 1

refer page 07 for project details



WATER RESERVOIR 2

refer page 09 for project details



COWRA CIVIC CENTRE / CIVIC SQUARE

refer page 11 for project details



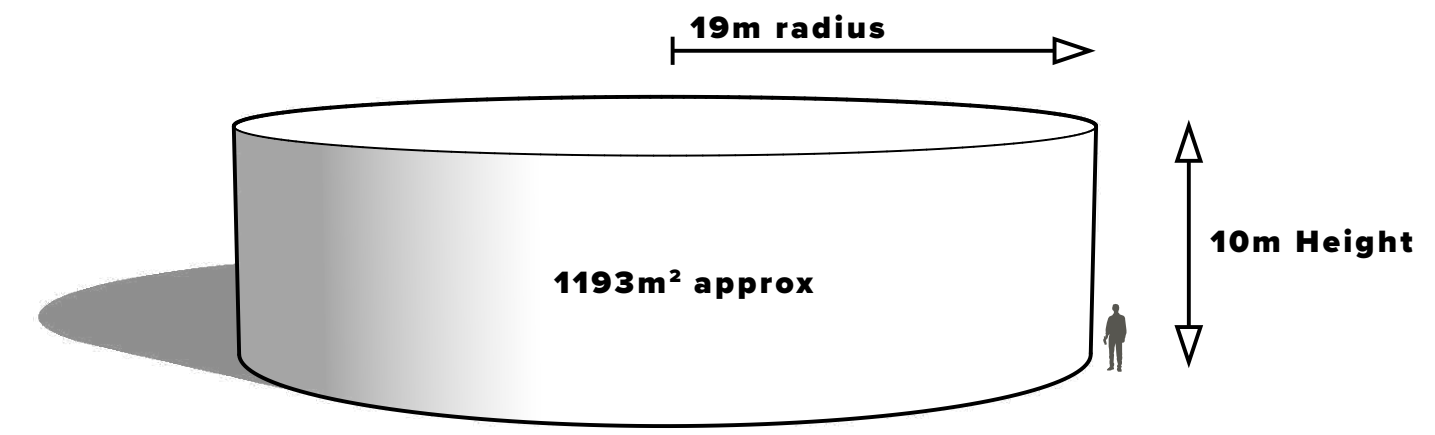
CBD LANEWAY

refer page 13 for project details



# A water reservoir # 1

**\$120K**



project budget

canvas dimensions

google street view

## about the site

Water Reservoir 1 is a large concrete water tank located in a visually prominent location within the Cowra Peace Precinct.

The Water Reservoir is located on a Council owned parcel of land situated within the State Heritage Listed Cowra Prisoner of War Camp (POW Camp). The Water Reservoir does not form part of the POW Camp and is not heritage listed.

This entire area of approximately 170 ha is named the 'Peace Precinct' an important outdoor recreation area of Cowra. More information the Peace Precinct can be found in Cowra Council's Peace Precinct Master Plan. Along with the POW Camp there are a number of other key locations within this area including: the Japanese Garden and Cultural Centre, the Cowra Sculpture Park, the Adventure Play Ground and Billy Goat Hill Look Out.

The POW Camp, constructed between 1941 and 1944 is located within the Peace Precinct, and is reported as contained within the list of the Top Heritage Sites in NSW. The camp housed Japanese, Italian, Koreans, Taiwanese POW's as well as Indonesian civilians. In 1944, 1000 Japanese Prisoners of War (POW) staged a mass breakout - the

biggest breakout in British and Australian War History. A total of 231 Japanese POW and four Australians lost their lives during the breakout. As a result of this event the Cowra Japanese Garden and Cultural Centre was designed by Mr Nakajima an acclaimed Japanese landscape architect in 1975 to recognise and develop the relationship between the people of Cowra and the people of Japan. This important relationship with the Japanese Government and its people and Cowra continues to this day.

Council has recently opened a 'WW1 Memorial Grove' now identified as a registered War Memorial. The Memorial Grove is located approximately 100 metres to the north of the water reservoir, towards Evans Street. The Memorial Grove was designed by Council to remember the service personnel who did not return from WW1 and commemorates the 100 years since the conflict ended. This consists of a grove of native trees and a future sign to identify the location. As a result of the research, it was discovered that 1 family from Cowra sacrificed 4 men in this conflict, the biggest cohort of loss for any one Cowra Family. The Coe's are a First Nations family who still reside in Cowra and throughout NSW.

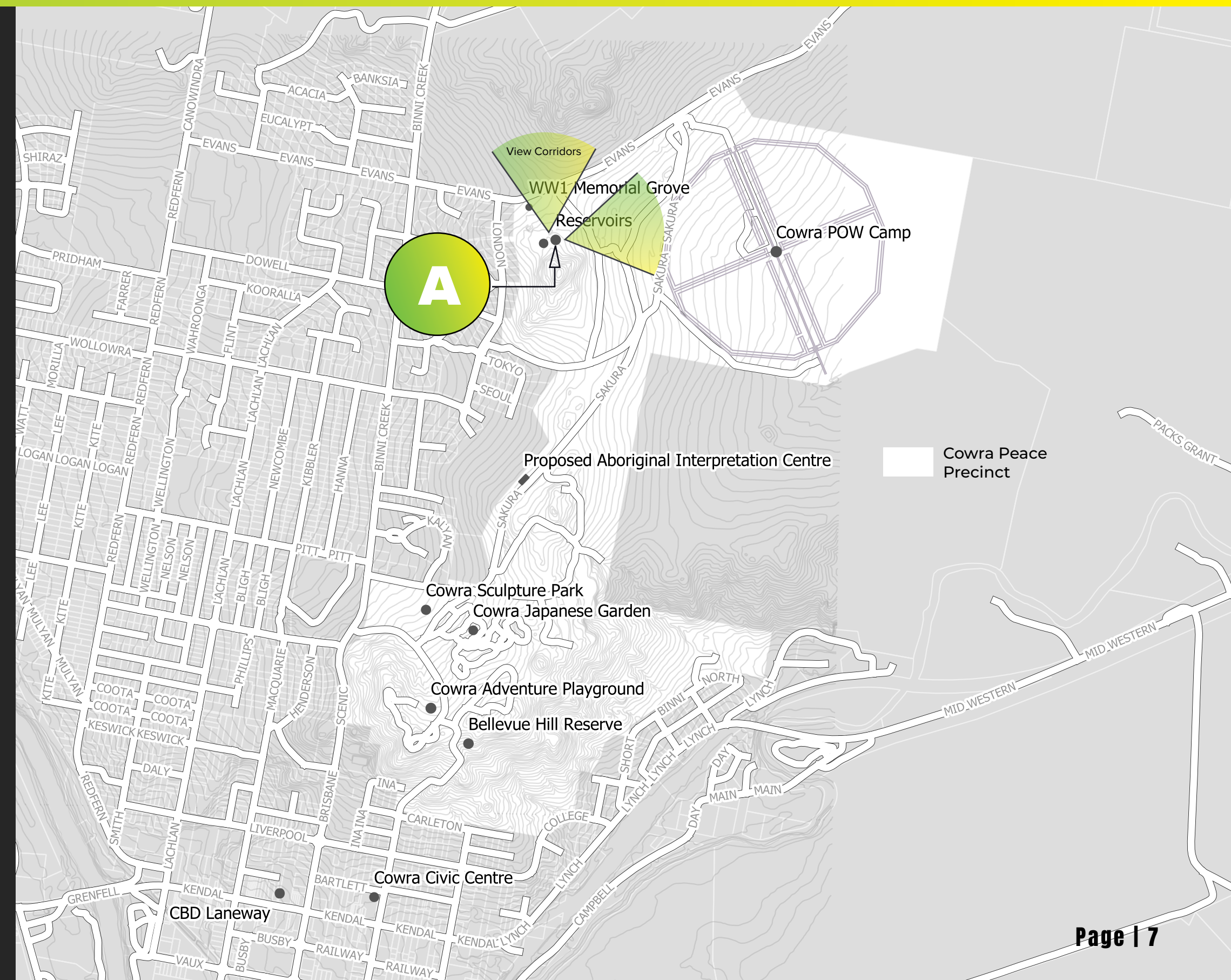
## project scope

It is envisaged to have a mural on the face of the Water Reservoir facing towards the north (Evans Street) or towards the east (POW Camp site).

The size of the artwork will be determined by the budget, materials and the need for cherry pickers and/or scaffolding.

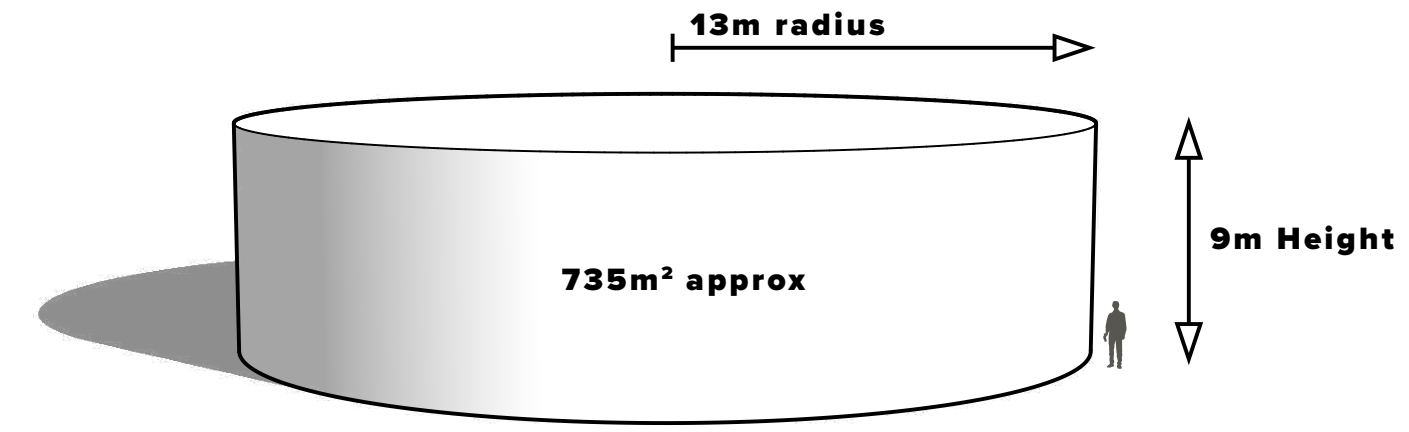
## acceptable themes

- Aboriginal
- First Nations
- Wiradjuri
- Wartime
- Prisoner of War Camp
- Japanese
- Nature
- Environment



# B water reservoir # 2

\$120K



project budget

canvas dimensions

google street view

## about the site

Water Reservoir 2 is co-located with Water Reservoir 1. Slightly smaller in size, Reservoir 2 is also concrete water tank located in a visually prominent location within the Cowra Peace Precinct.

The Water Reservoirs is located on a Council owned parcel of land situated within the State Heritage Listed Cowra Prisoner of War Camp (POW Camp). The Water Reservoir does not form part of the POW Camp and is not heritage listed.

This entire area of approximately 170 ha is named the 'Peace Precinct' an important outdoor recreation area of Cowra. More information the Peace Precinct can be found in Cowra Council's Peace Precinct Master Plan. Along with the POW Camp there are a number of other key locations within this area including: the Japanese Garden and Cultural Centre, the Cowra Sculpture Park, the Adventure Play Ground and Billy Goat Hill Look Out.

The POW Camp, constructed between 1941 and 1944 is located within the Peace Precinct, and is reported as contained within the list of the Top Heritage Sites in NSW. The camp housed Japanese, Italian, Koreans, Taiwanese POW's as well as Indonesian civilians. In 1944, 1000 Japanese Prisoners

of War (POW) staged a mass breakout - the biggest breakout in British and Australian War History. A total of 231 Japanese POW and four Australians lost their lives during the breakout. As a result of this event the Cowra Japanese Garden and Cultural Centre was designed by Mr Nakajima an acclaimed Japanese landscape architect in 1975 to recognise and develop the relationship between the people of Cowra and the people of Japan. This important relationship with the Japanese Government and its people and Cowra continues to this day.

Council has recently opened a 'WW1 Memorial Grove' now identified as a registered War Memorial. The Memorial Grove is located approximately 100 metres to the north of the water reservoir, towards Evans Street. The Memorial Grove was designed by Council to remember the service personnel who did not return from WW1 and commemorates the 100 years since the conflict ended. This consists of a grove of native trees and a future sign to identify the location. As a result of the research, it was discovered that 1 family from Cowra sacrificed 4 men in this conflict, the biggest cohort of loss for any one Cowra Family. The Coe's are a First Nations family who still reside in Cowra and throughout NSW.

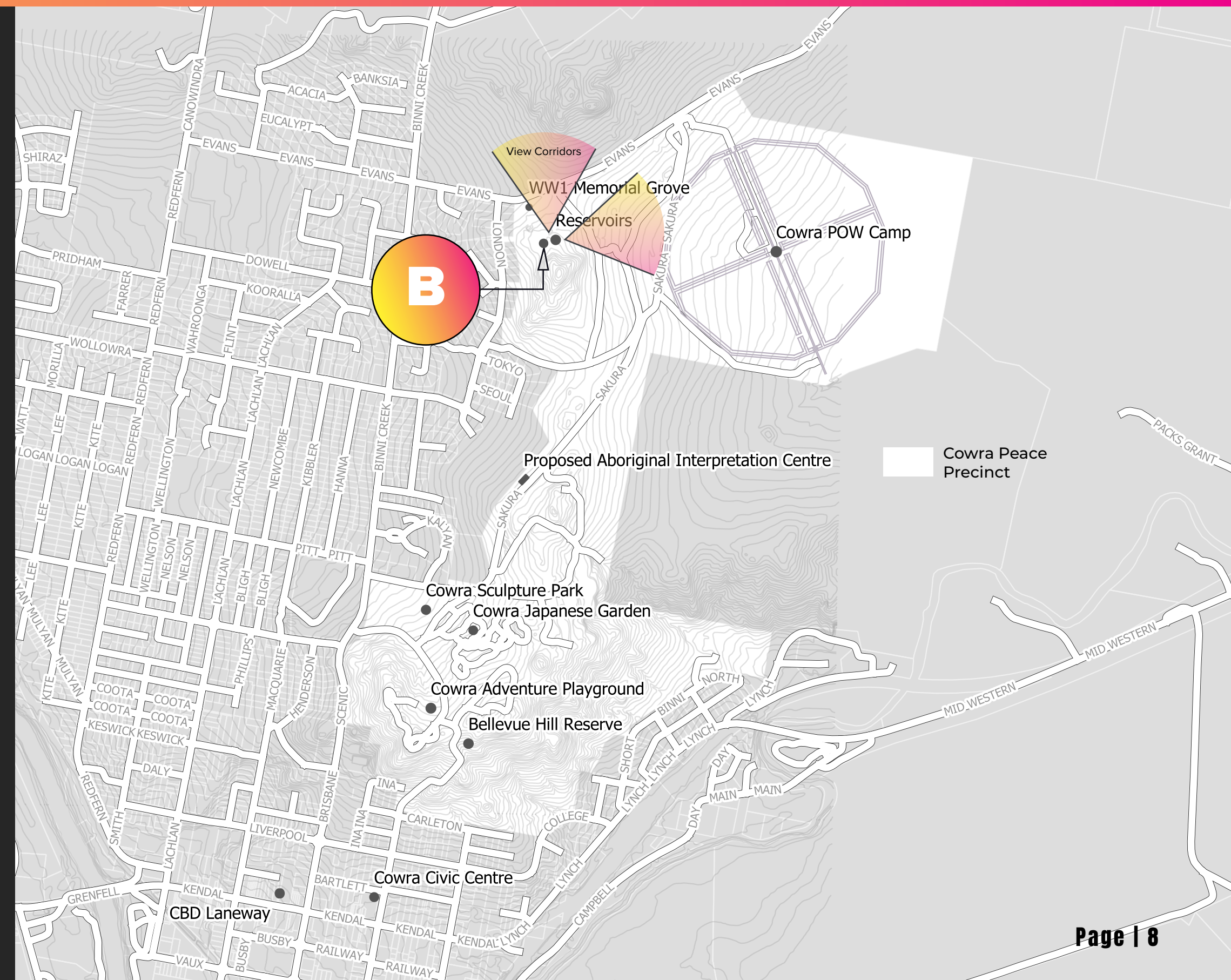
## project scope

It is envisaged to have a mural on the face of the Water Reservoir facing towards the north (Evans Street) or towards the east (POW Camp site).

The size of the artwork will be determined by the budget, materials and the need for cherry pickers and/or scaffolding.

## acceptable themes

- Aboriginal
- First Nations
- Wiradjuri
- War
- Prisoner of War Camp
- Japanese
- Nature
- Environment



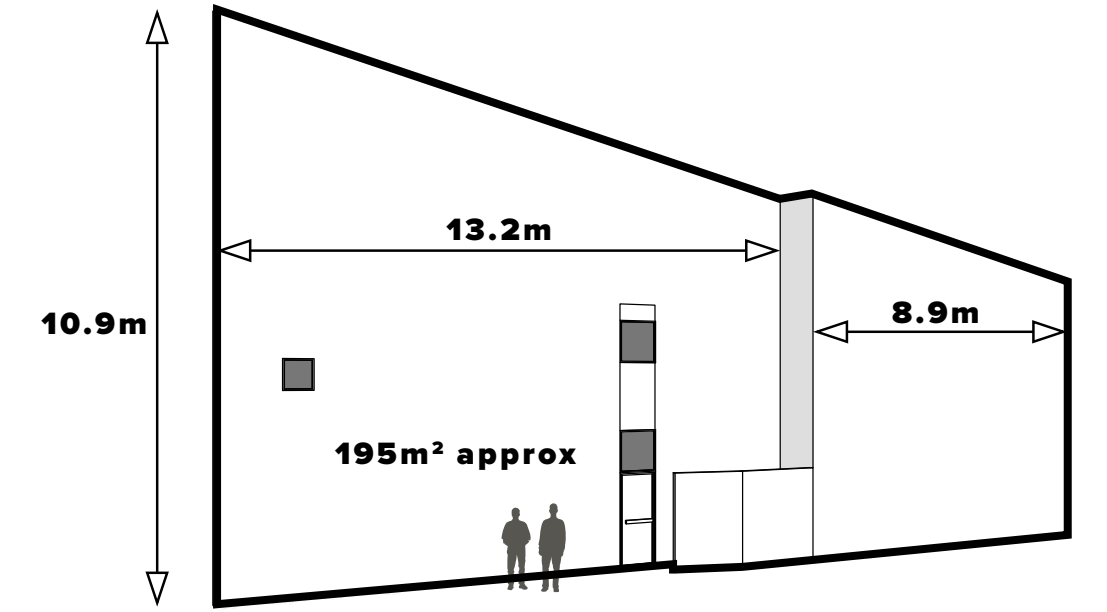


**GARRISON WALK**

location photograph  
**water reservoirs # 1 and 2**

# cowra civic centre

**\$10K**



project budget

canvas dimensions

google street view

## about the site

The Cowra Civic Centre is a key anchor for the Civic Square, an area that Council plans to redevelop into a cultural hub for the Cowra Community.

The Civic Centre is of regional importance, providing a venue for live performance and civic events for over 50 years.

The building itself has architectural presence within the streetscape, rising 3 storeys at the Darling Street frontage.

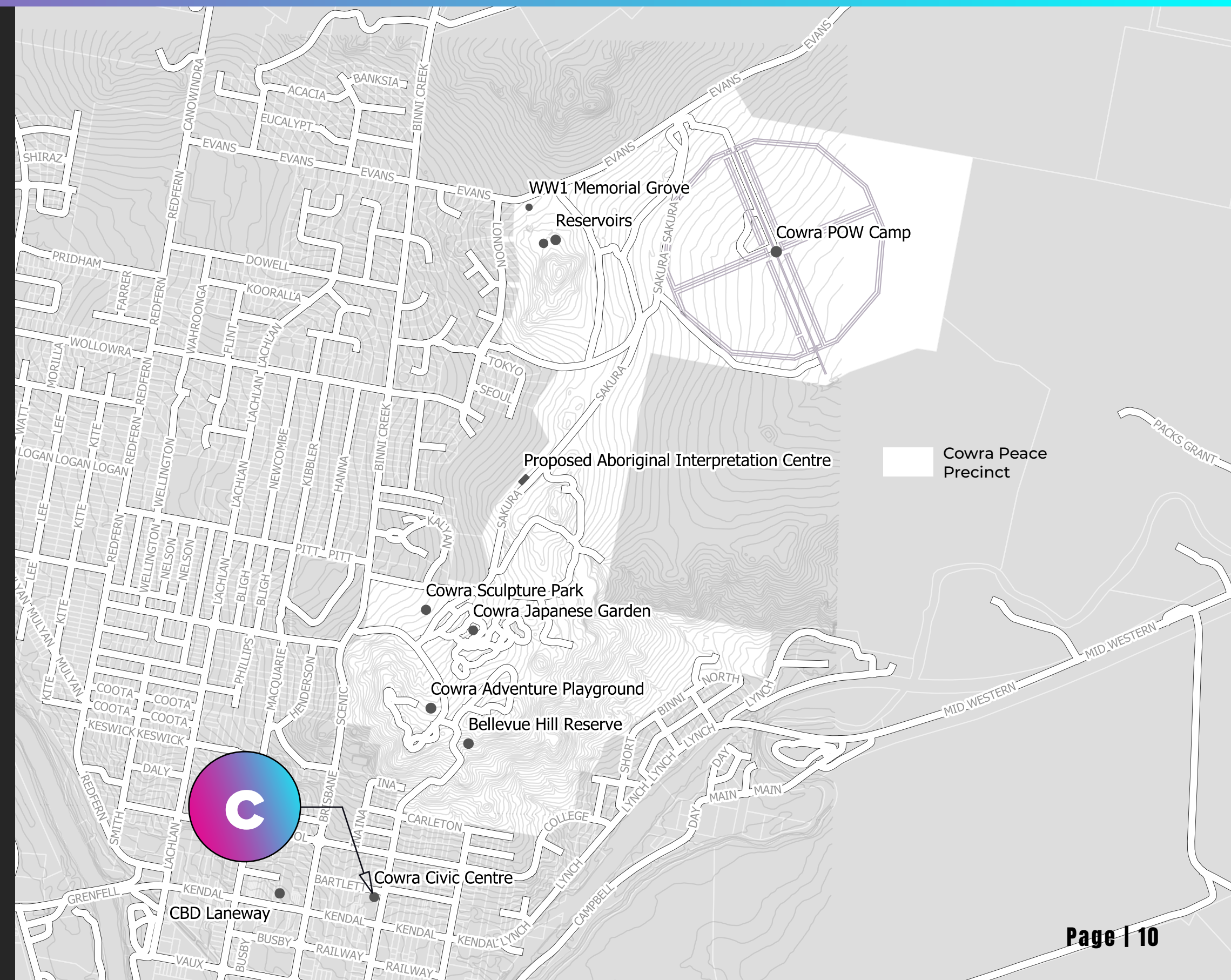
## project scope

It is envisaged to have a mural on the north eastern facing external brick wall of the Civic Centre building.

The size of the artwork will be determined by the budget, materials and the need for cherry pickers and/or scaffolding.

## acceptable themes

- Music
- Entertainment
- Community
- Youth
- Theatre
- Dance
- Performing arts

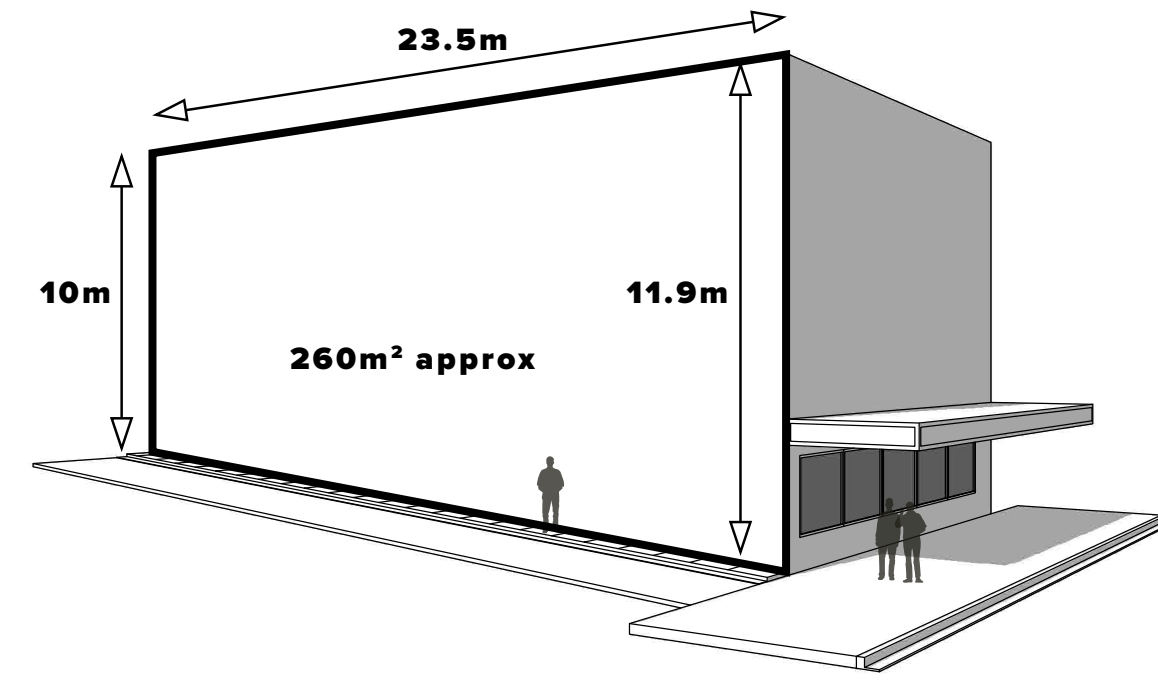




location photograph  
**cowra civic centre**

# D cowra cbd lane way

**\$10K**



project budget

canvas dimensions

google street view

## about the site

The lane way is located within the Central Business District (CBD) of Cowra. The CBD has been the focus of major investment and improvement by Cowra Council in recent years. The road pavement in Kendal Street (the main road thoroughfare) has been resurfaced and fitted with new street lighting, and the footpath environment has been reconstructed and improved with new street furniture and landscaping.

The lane way is located at the mid-block crossing, a primary location where pedestrians seek to cross from one side of Kendal Street to the other. The lane way provides a key link for pedestrians accessing a large off-street public car park.

The lane way itself is owned by Cowra Shire Council, but the wall on which the mural will be located is privately owned. Consent has been gained from the property owner.

## project scope

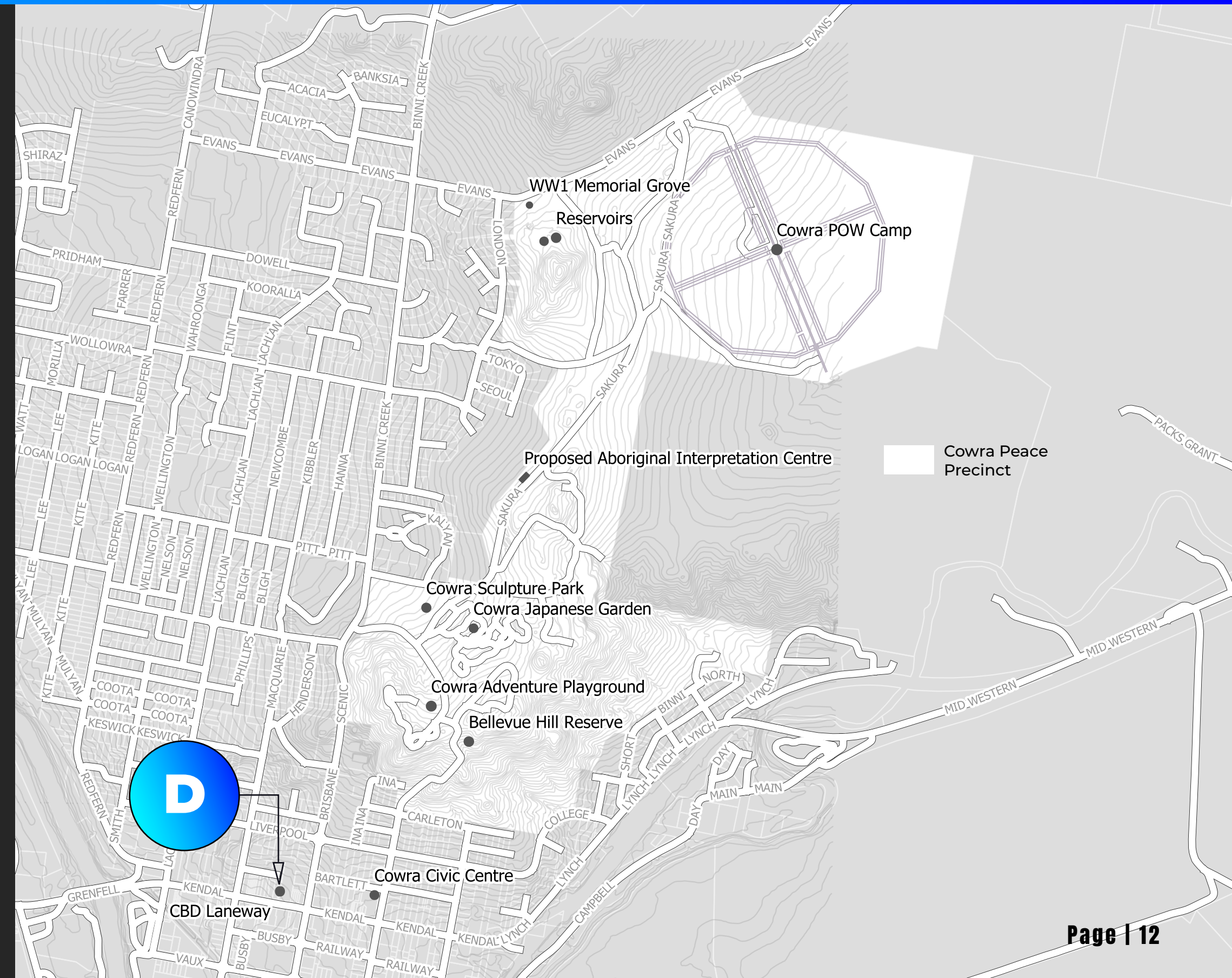
The location for the artwork will be on the existing brick faced wall on the eastern side of the lane way.

The artist will need to engage in a workshop or mural program with the local community, school groups or other key stakeholder groups. The artist will be responsible for leading the workshop or mural program and should be able to demonstrate experience with these tasks.

The size of the artwork will be determined by the budget, materials and the need for cherry pickers and/or scaffolding.

## acceptable themes

Aboriginal  
First Nations  
Urban  
Street  
Community  
Youth





location photograph  
**cowra cbd lane way**

To be considered for this project, Artists are required to provide the following information by 6 December 2021

Short-listed artists will receive a \$500 fee from Cowra Council towards the costs of preparing the EOI

## stage 1 submission criteria

### 05

- Completed Artist Information Sheet and Submission Checklist
- Fee proposal to complete the artwork(s)
- Production timeline to create the artwork(s)
- Maintenance and durability information
- Curriculum Vitae and summary of previous experience
- Relevant insurances (min. \$20M Public Liability Insurance and valid Worker's Compensation Insurance)
- A written description of the artwork and response to the theme
- Drawings, sketches and / or digital images indicating the location, scale, colour and materials of the artwork
- Material samples
- A methodology for community participation in the project, where required.
- Details of major fabricators, industry collaborators and other design professionals required to produce the artwork
- Preliminary budget or cost estimates
- Work program and payment schedule
- Preliminary details of artwork installation requirements



Submissions will be evaluated by a panel of judges from the project team (which may include external architectural and landscape consultants ) in accordance with the Stage 1 selection criteria. A shortlist of finalist artists will be selected to proceed to Stage 2.

no.	criteria	weight
1	previous experience working on projects of a similar nature, scale and complexity	25%
2	Innovative and creative response to the brief (this EOI document)	25%
3	Ability to achieve project according to timeline and budget	25%
4	Demonstrated capacity for collaborative approach	25%
5	Total	100%

## 06

selection selection selection **selection** selection selection selection  
criteria criteria criteria **criteria** criteria criteria criteria

stage 2  
shortlist  
criteria  
stage 2  
shortlist  
criteria  
stage 2  
shortlist  
criteria  
stage 2  
shortlist  
criteria  
stage 2  
shortlist  
criteria  
stage 2  
shortlist  
criteria  
stage 2  
shortlist  
criteria  
stage 2  
shortlist  
criteria  
stage 2  
shortlist  
criteria  
stage 2  
shortlist  
criteria  
stage 2  
shortlist  
criteria

07

Short-listed artists will be notified by Cowra Council on or prior to Friday 10th December 2021 and invited to submit the following detail for final assessment

A fee of \$1,000 will be paid to one or more artists who progress to this stage of the EO1

- Detailed scaled drawings, images or other visual presentation of the proposed artwork
- Proposed materials, renewable, recyclable, sustainable and ethically sourced materials highly desired
- Proposed maintenance schedule
- Confirmed program

stage 3 contractual criteria  
stage 3 contractual criteria  
stage 3 contractual criteria  
stage 3 contractual criteria  
stage 3 contractual criteria  
stage 3 contractual criteria  
stage 3 contractual criteria  
stage 3 contractual criteria  
stage 3 contractual criteria  
stage 3 contractual criteria  
stage 3 contractual criteria  
stage 3 contractual criteria  
stage 3 contractual criteria  
stage 3 contractual criteria  
stage 3 contractual criteria  
stage 3 contractual criteria  
stage 3 contractual criteria  
stage 3 contractual criteria  
stage 3 contractual criteria  
stage 3 contractual criteria

08

The successful artist(s) to return a signed License Agreement and Contract by Friday 25 February 2022

Payment for Stage 3 works will be awarded up to the value of \$4,000 for the artists' completed preparation for final design documentation


Workshop with the project team/ project manager to confirm the concept is holistic with the intention of the projects, including sustainability, safety and risk assessment.

Design development e.g. drawings, details, images, specifications, samples and any prototypes

Programme for detailed design, fabrication and installation

Cost plan for all design stages including installation

Artist detail design drawings due no later than Friday 8 April 2022

An aerial photograph of a town, likely Cowra, Australia, with a blue color overlay. The town is surrounded by greenery and hills in the background. The sky is a deep blue with some clouds. The text is overlaid on a dark blue rounded rectangle in the center of the image.

## note to artists

Artists are advised that the majority of work is likely to be exempt development in accordance with State Environmental Planning Policy (Exempt and Complying Development Codes) 2008, except for artwork that is installed above 6 metres in height. Where a Development Application is required prior to any artwork proceeding, this will be prepared by Cowra Council.

Payment for Stage 4 works will be awarded as per the agreed Artist's fee submission.

stage 4 artwork installation  
stage 4 artwork installation  
stage 4 artwork installation  
stage 4 artwork installation  
stage 4 artwork installation  
stage 4 artwork installation  
stage 4 artwork installation  
stage 4 artwork installation  
stage 4 artwork installation  
stage 4 artwork installation

**09**

Delivery of final artwork in accordance with approved detailed design drawings.  
Schedule of any samples or testing required.  
A comprehensive maintenance schedule.  
Artists to be available for media press release and on-site unveiling.  
Final installation is required to be completed by Friday 23 September 2022.

stage

criteria

date

1	Submission of EOI	Monday 6 December 2021
2	Short-listed artists invited to prepare concept designs	Friday 10 December 2021
3	Return license agreement and contract	Friday 25 February 2022
	Finalisation of artwork design	Friday 8 April 2022
4	Completion of artwork installation	Friday 23 September 2022

10

project project project **project** project project project project  
timeline timeline timeline **timeline** timeline timeline timeline timeline

# submissions + enquiries

---

## **cowra shire council**

Kate Alberry / Dean Steward (Project Contacts)

Cowra Shire Council

116 Kendal Street

Cowra NSW 2794

[dsteward@cowra.nsw.gov.au](mailto:dsteward@cowra.nsw.gov.au)

6340 2047

terms  
and  
conditions  
terms  
and  
conditions  
terms  
and  
conditions  
terms  
and  
conditions  
terms  
and  
conditions  
terms  
and  
conditions  
terms  
and  
conditions  
terms  
and  
conditions

#### TERMS & CONDITIONS

The Promoter is Cowra Shire Council (Council), of 116 Kendal Street, Cowra NSW 2794. The eligibility of entrants and the final selection process will be determined by a judging panel at Cowra Council (within its sole discretion). Council reserves the right to vary the terms of, or cancel, the EOI at any time without liability to any entrant or other person, subject to applicable laws.

#### PRIVACY AND COLLECTION NOTICE

Council will collect and use each entrant's personal information for the purposes of conducting the EOI (which may include disclosure to third parties for the purpose of processing and conducting the EOI) and for marketing and promotional purposes, public statements, media publications and advertisements in relation to the EOI.

By entering the EOI, an entrant submits to Council and Council collects, personal information about the entrant including (but not limited to) the entrant's full name, email address, mailing address, phone number and other contact information, previous work experience (in the form of a CV) and an Artist's Statement in relation to the EOI entry that is submitted.

The EOI process may also be photographed or filmed/recorded so an entrant's facial image, as well as photographs or recordings of their EOI entry may be collected. By entering the EOI, entrants consent to the use of their personal information as described in this Privacy and Collection Notice.

Entrants may access, change and/or update their personal information or may find out more information about how Council collects, uses and manage the personal information it holds, by viewing Councils Privacy Policy.

Council reserves the right, at any time, to request verification of the age, identity, residential address or any other information relevant to participation in the EOI of all applicants. Council reserves the right to disqualify any entrant who provides false information or fails to provide information that is reasonably requested by Council. Council reserves the right, in its sole discretion, to refuse to accept entries which are incomplete, indecipherable, offensive, do not comply with these terms and conditions or which contravene any applicable laws or regulations. The eligibility of entrants is solely within the discretion of Council. Council accepts no responsibility for late, lost, misdirected or damaged entries or other communications.

If the EOI process involves submission of a photograph, drawing or other content or providing content as entry, by entering the submission process, each entrant agrees:

1. to their entry being made available for public viewing;
2. that they, and their entry may be photographed, filmed or recorded by Council for use and disclosure to the media for marketing purposes. The photographs or video footage may be used on the Council website, our social media pages, in printed marketing materials or published in other third-party media such as newspapers or news programming;
3. that all entries are subject to the approval of Council. Council reserves the right to approve all entries before publication and to remove any entries at any time in its absolute discretion. However, Council is not responsible for any entries that are published and visitors view them at their own risk;
4. that if they upload or otherwise cause another person's profile picture or other Facebook content to be made publically available, that they have obtained consent from each person to submit that person's profile picture or other Facebook content;
5. to release Council from liability for their entry to the full extent permitted by law;
6. to indemnify Council against any claim, legal or otherwise that may arise out of the use or publication of the entry;
7. promises that their entry is original and does not infringe the intellectual property rights of any third party;
8. that Council has an unrestricted, irrevocable, transferable, divisible right and licence to use and modify their entry for the purposes of Council business including for promotional purposes without the payment of any further fee or compensation . If requested by Council, the entrant agrees to sign any further documentation required by Council to give effect to this arrangement. To the extent permitted by law, entrants unconditionally and irrevocably consent to any act or omission that would otherwise infringe any moral rights in their entry;
9. that if the entry involves a photograph, they have obtained the prior consent of any person depicted in the photo or, in the case of children, they have obtained the prior consent of the parents or legal guardians of the depicted children.

#### DISCLAIMER OF LIABILITY

While every effort is made to provide accurate and complete information, Council does not warrant or represent that the information in this presentation is free from errors or omissions or is suitable for your intended use. The information provided in this presentation may not be suitable for your specific needs and should not be relied upon by you in substitution of you obtaining independent advice. Subject to any terms implied by law and which cannot be excluded, Council accepts no responsibility for any loss, damage, cost or expense (whether direct or indirect) incurred by you as a result of any error, omission or misrepresentation in this presentation. All information in this presentation is subject to change without notice.