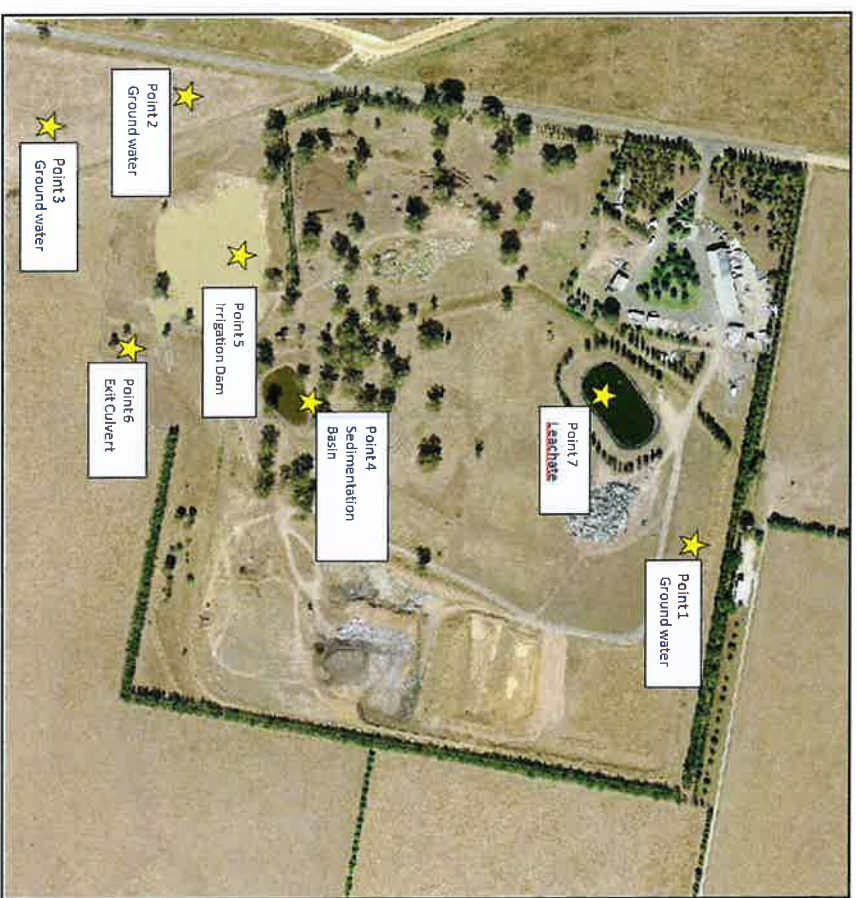


**Analytical Results - (MRF)
GLENLOGAN ROAD MATERIAL RECYCLING FACILITY
& LANDFILL SITE**

EPA License Number	6435
Link to Licence	https://adps.epa.nsw.gov.au/processapp/Detail
Licensee Name	See link above for full licence details Cowra Shire Council
Licensee Address	Private Bag 342, Cowra NSW 2794
Location of Monitoring Point	GLENLOGAN ROAD MATERIAL RECYCLING
Scheduled Activity	Non-thermal treatment of general waste Waste disposal by application to land
Units of Measure	Listed below
Monitoring points	Listed below, also see map
Date Published	28/04/2023
Date Obtained	28/12/2017
Frequency of Monitoring	Monitoring Points 1, 2, 3, 4, 5, 6 and 7 twice a year

Map of Monitoring Points



2022-2023 REPORTING

Sampling twice a year for Points 1,2,3,7			Results							
Pollutant	Limits set by EPA	Reporting Limit set on Lab Report	Monitoring Point 1 Ground Water		Monitoring Point 2 Ground Water		Monitoring Point 3 Ground Water		Monitoring Point 7 Leachate	
Ammonia	N O	0.01			7/07/2022	15/12/2021	7/07/2022	15/12/2021	7/07/2022	15/12/2021
Biological Oxygen Demand	N O	5			<0.01	0.03	<0.01	<0.01	18	0.59
Calcium	L I	0.2			<5	<5	<5	<5	22	15
Chloride	L I	1			26	27	21	22	160	<0.2
Fluoride	L I	0.1			62	95	7.6	8.5	19000	15000
Iron	L I	0.005			0.72	0.81	0.57	0.56	0.25	<5.0
Magnesium	L I	0.1			220	11	950	92	900	480
Manganese	L I	0.001			22	22	15	15	70	<0.1
Nitrate	L I	0.005			4	<1	12	3	1800	230
Potassium	L I	0.1			1.9	1.6	2.8	2.9	<0.50	<0.25
Sodium	L I	0.5			1.5	1.5	0.5	0.6	180	<0.1
Standing water Level	L I	N.A			100	100	19	17	11000	<0.5
Sulfate	L I	1			24	24	21	22	NA	NA
Total Organic Carbon	L I	0.2			15	17	6.3	6.3	48	30
Total Phenolics	L I	0.01			1.7	2	0.5	0.8	84	6
Alkalinity	L I	5			<0.1	<0.1	<0.1	<0.1	<0.1	<0.1
Conductivity	L I	2			220	270	120	280	340	170
pH	L I	0			660	740	290	280	60000	45000
Total Suspended Soliid	L I	5			7.1	7.7	6.9	6.9	6.7	8.1
					NA	NA	NA	NA	NA	NA

Sampling twice a year for Points 4,5 and 6			Results					
Pollutant	Limits set by EPA	Reporting Limit set on Lab Report	Monitoring Point 4 Sedimentation Basin		Monitoring Point 5 Irrigation Dam		Monitoring Point 6 Exit Culvert	
Alkalinity	L I	5	7/07/2022	15/12/2021	7/07/2022	15/12/2021	7/07/2022	15/12/2021
Conductivity	L I	2	94	69	95	71	49	68
pH	L I	0	1500	1900	2700	1900	110	160
Total Suspended Soliid	L I	5	6.9	7.4	6.8	7.4	6.7	7
			76	26	<5	180	150	74

2021-2022 REPORTING

Sampling twice a year for Points 1,2,3,7			Results							
Pollutant	Limits set by EPA	Reporting Limit set on Lab Report	Monitoring Point 1 Ground Water		Monitoring Point 2 Ground Water		Monitoring Point 3 Ground Water		Monitoring Point 7 Leachate	
Ammonia	N O	0.01	8/09/2021	22/12/2021	8/09/2021	22/12/2021	8/09/2021	22/12/2021	8/09/2021	22/12/2021
Biological Oxygen Demand	N O	5	0.04	0.15	0.03	0.15	42	17		
Calcium	L	0.2	<5	<5	<5	<5	36	26		
Chloride	L	1	21	21	21	20	200	160		
Fluoride	L	0.1	71	47	53	47	16000	21000		
Iron	L	0.005	0.76	0.86	0.77	0.86	0.24	0.1		
Magnesium	L	0.1	<5	0.13	<5	0.14	120	440		
Manganese	L	0.001	16	17	17	17	82	88		
Nitrate	L	0.005	<1	0.006	<1	0.006	2100	660		
Potassium	L	0.1	1.9	3.1	3.1	3.1	<0.25	0.1		
Sodium	L	0.5	1.3	1.6	1.3	1.5	220	170		
Standing water Level	N.A	N.A	84	88	85	88	8600	11000		
Sulfate	L	1	24	24	21	22	NA	NA		
Total Organic Carbon	L	0.2	14	12	12	12	9.3	19		
Total Phenolics	L	0.01	1.6	2.2	1.6	2.3	100	86		
Alkalinity	L	5	<0.01	<0.1	<0.01	<0.1	0.02	0.11		
Conductivity	L	2	220	210	190	220	530	310		
pH	L	0	600	560	500	560	48000	48000		
Total Suspended Soliid	L	5	6.8	7.4	7	7.4	7.6	8.2		
			NA	NA	NA	NA	NA	NA		

Sampling twice a year for Points 4,5 and 6			Results					
Pollutant	Limits set by EPA	Reporting Limit set on Lab Report	Monitoring Point 4 Sedimentation Basin		Monitoring Point 5 Irrigation Dam		Monitoring Point 6 Exit Culvert	
Alkalinity	L	5	8/09/2021	22/12/2021	8/09/2021	22/12/2021	8/09/2021	22/12/2021
Conductivity	L	2	67	62	78	68	51	88
pH	L	0	150	8000	180	440	100	190
Total Suspended Soliid	L	5	7.1	7.1	7.1	7.4	7	7.1
			39	89	<5	15	31	31

2020-2021 REPORTING

Pollutant			Limits set by EPA		Reporting Limit set on Lab Report		Monitoring Point 1 Ground Water		Monitoring Point 2 Ground Water			Monitoring Point 3 Ground Water		Monitoring Point 7 Leachate	
Sample date			Limits set by EPA		Reporting Limit set on Lab Report		Monitoring Point 1 Ground Water		Monitoring Point 2 Ground Water			Monitoring Point 3 Ground Water		Monitoring Point 7 Leachate	
Ammonia			0.01				20/05/2020	2/12/2020	20/05/2020	2/12/2020	20/05/2020	2/12/2020	20/05/2020	2/12/2020	0.35
Biological Oxygen Demand			5				7	<5	<5	<5	<5	<5	14	<5	
Calcium			0.2				18	26	20	20	20	20	22	27	
Chloride			1				28	63	6.1	6.1	6.1	6.1	0.04	83	
Fluoride			0.1				0.54	0.66	0.33	0.33	0.47	0.15	0.35		
Iron			0.005				14	<5	5	5	12	6	13		
Magnesium			0.1				14	21	14	14	14	17	22		
Manganese			0.001				3	5	5	5	5	<1	65		
Nitrate			0.005				0.14	0.41	2.6	2.6	2.7	1.4	0.03		
Potassium			0.1				1.5	1.5	0.6	0.6	1	1	55		
Sodium			0.5				58	84	17	17	16	86	64		
Standing water Level			N.A												
Sulfate			1				8.2	12	6.1	7.2	7.2	1.4	40		
Total Organic Carbon			0.2				5.9	1.7	2.1	1.1	1.1	33	19		
Total Phenolics			0.01				<0.01	<0.01	<0.01	<0.01	<0.01	<0.01	<0.01		
Alkalinity			5				180	250	120	130	130	110	230		
Conductivity			2				430	630	270	260	260	820	710		
pH			0				7.2	6.8	7.2	7.2	6.9	9	7.7		
Total Suspended Solid			5				NA	NA	NA	NA	NA	NA	NA		

Pollutant		Limits set by EPA		Reporting Limit set on Lab Report		Monitoring Point 4 Sedimentation Basin		Monitoring Point 5 Irrigation Dam		Monitoring Point 6 Exit Culvert	
Sample date		Limits set by EPA		Reporting Limit set on Lab Report		Monitoring Point 4 Sedimentation Basin		Monitoring Point 5 Irrigation Dam		Monitoring Point 6 Exit Culvert	
Alkalinity						20/05/2020	2/12/2020	20/05/2020	2/12/2020	20/05/2020	2/12/2020
Conductivity						67	140	78	98	51	74
pH						150	510	180	200	100	140
Total Suspended Solid						7.1	7.2	7.1	7.2	7	6.8
						39	130	<5	6	31	24

2018-2019 REPORTING

Sampling twice a year for Points 1,2,3,7		Results								
Pollutant	Limits	Reporting Limit set on Lab Report	Monitoring Point 1 Ground Water	Monitoring Point 2 Ground Water	Monitoring Point 3 Ground Water	Monitoring Point 7 Leachate	Monitoring Point 4 Ground Water	Monitoring Point 5 Ground Water	Monitoring Point 6 Ground Water	
Ammonia		0.01	27/09/2018	13/11/2018	27/09/2018	13/11/2018	27/09/2018	13/11/2018	27/09/2018	13/11/2018
Biological Oxygen Demand		5	N	N	0.03	<0.01	0.02	0.02	0.66	N/A
Calcium		0.2	0	0	7	<5	24	<5	24	N/A
Chloride		1	S	S	16	17	16	17	15	N/A
Fluoride		0.1	S	S	23	25	28	25	470	N/A
Iron		0.005	S	S	0.46	0.68	0.6	0.72	0.49	N/A
Magnesium		0.1	S	S	0.037	0.008	0.032	<0.005	<0.005	N/A
Manganese		0.001	S	S	11	13	11	14	49	N/A
Nitrate		0.005	S	S	0.015	0.022	0.005	0.012	0.089	N/A
Potassium		0.1	S	S	0.75	0.39	1.6	0.27	<0.005	N/A
Sodium		0.5	S	S	3.4	2.4	3.4	1.6	160	N/A
Standing Water Level		N/A	S	S	74	50	74	51	310	N/A
Sulfate		1	S	S	22.6	18.6	20.4	23.5	N/A	N/A
Total Organic Carbon		0.2	S	S	11	6.5	15	6.5	30	N/A
Total Phenolics		0.01	S	S	11	3.3	12	3.1	130	N/A
Alkalinity		5	D	D	<0.01	<0.01	<0.01	<0.01	0.01	N/A
Conductivity		2	F	F	150	190	200	200	460	690
pH		0	Y	Y	350	450	450	450	2300	3100
Total Suspended Solids		5	R	R	7.4	7.1	7.4	7.1	9.6	8.1
					N/A	N/A	N/A	N/A	N/A	N/A

Sampling twice a year for		Results						
Pollutant	Limits	Reporting Limit set on Lab Report	Monitoring Point 4 Cottonvale Dam	Monitoring Point 5 Leitchfield Dam	Monitoring Point 6 Cott's Creek	Monitoring Point 7 Cott's Creek	Monitoring Point 8 Cott's Creek	
Sample date			27/09/2018	13/11/2018	27/09/2018	13/11/2018	27/09/2018	13/11/2018
Alkalinity			140	130	93	280	83	98
Conductivity			330	350	230	900	160	200
pH			7.6	8.9	8.1	7	7.5	7
Total Suspended Solids			160	9	<5	29000	29	<5



Inspection Point	Description
1	Groundwater Monitoring Bore
2	Groundwater Monitoring Bore
3	Groundwater Monitoring Bore
4	Surface Water Monitoring Point
5	Surface Water Monitoring Point
6	Surface Water Monitoring Point
7	Leachate Quality Monitoring Point

NOTES / AMENDMENTS :

SCALE : 1:2500
 DATE :
 DRAWN BY :
 CHECKED BY :
 PROJECT CODE :

DRAWN BY :
 DATE :
 CHECKED BY :
 DATE :

DIRECTOR AND RECOMMENDED
 APPROVED :
 DATE :
 MANAGER DATE :



MATERIALS RECYCLING FACILITY
 EPA LICENCE 6435
 INSPECTION POINT(S)

A3
 SHEET NO. 1
 OF SHEETS 1