

## Analytical Results - STP

**EPA License Number** 3648

<https://apps.epa.nsw.gov.au/prpoeoapp/ViewPOEOLicence.aspx?DOCID=132283&SYSUID=1&LICID=3648>

**Link to Licence**

See link above for full licence details

**Licensee Name** Cowra Shire Council

**Licensee Address** Private Bag 342, Cowra NSW 2794

**Location of Monitoring Point** CSTP - North Logan Rd, COWRA NSW 2794, LOT 146 DP 12349, LOT 147 DP 12349, LOT 148 DP 12349

**Scheduled Activity** Sewage Treatment Systems

**Scale** > 219 - 1000 ML discharged

**Unit/s of Measure** Listed below

**Monitoring points** Listed below, also see map

**Date Published** 28/02/2023

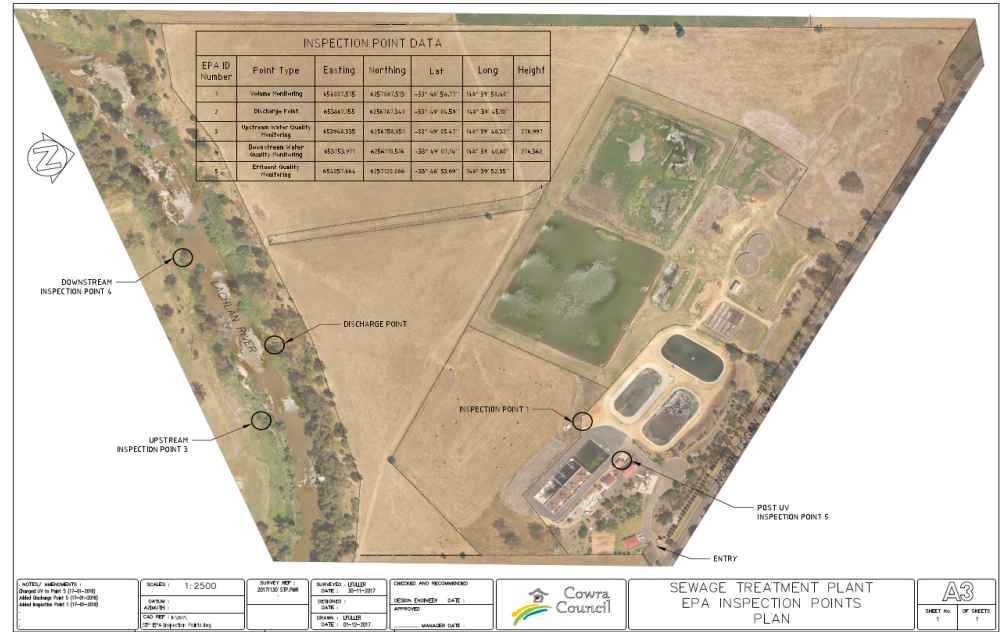
**Date Obtained** 24/02/2023

**Frequency of Monitoring** Monthly Points 3 & 4, Monthly during discharge Point 2

**Link to Latest Weather Observations**

<http://www.bom.gov.au/climate/dwo/IDCJDW2038.latest.shtml>

**Map of Monitoring Points**



**Upstream (EPA monitoring point 3)**

Lachlan River upstream of discharge point indicated as Monitoring Location 3 [ x:653618 y:6256715 on map]

Date	pH	Suspended Solids	Total Oil & Grease	BOD	Ammonia	Total Nitrogen	Total Phosphorous	Faecal coliform
Unit of Measure	pH	mg/L	mg/L	mg/L	mg/L N	mg/L	mg/L P	CFU p/100ml
16-Jan-13	7.6	17	<1	<2	<0.1	0.84	0.03	0
22-Feb-13	7.8	15	<1	<2	<0.1	0.82	0.04	0
21-Mar-13	7.7	15	<1	<2	<0.1	0.88	0.03	340
18-Apr-13	7.6	27	<1	<2	<0.1	0.88	0.04	680
16-May-13	7.7	11	<1	<2	<0.1	0.79	0.03	80
21-Jun-13	7.8	10	<1	<2	<0.1	0.62	0.03	110
18-Jul-13	8.0	5	<1	<2	<0.1	0.39	0.02	270
15-Aug-13	8.0	6	<1	<2	<0.1	0.42	0.02	160
19-Sep-13	7.9	26	<1	<2	<0.1	0.67	0.03	160
17-Oct-13	7.8	21	<1	<2	<0.1	0.60	0.03	84
21-Nov-13	7.8	21	<1	<2	<0.1	0.57	0.02	240
18-Dec-13	7.9	14	<1	<2	<0.1	0.56	0.02	76
23-Jan-14	7.7	21	<1	<2	<0.1	0.60	0.02	96
20-Feb-14	7.7	20	<1	<2	<0.1	0.57	0.02	2000
21-Mar-14	8.0	9	<1	<2	<0.1	0.52	0.02	70
17-Apr-14	8.0	11	<1	<2	<0.1	0.62	0.03	20
15-May-14	7.8	17	<1	<2	<0.1	0.44	0.02	520
19-Jun-14	8.0	5	<1	<2	<0.1	0.33	0.01	145
17-Jul-14	7.9	26	<1	<2	<0.1	0.46	0.04	130
21-Aug-14	7.7	66	<1	3	<0.1	1.41	0.13	3160
18-Sep-14	7.9	29	<1	<2	<0.1	0.61	0.03	99
23-Oct-14	7.8	38	<1	<2	<0.2	0.66	0.03	113
28-Nov-14	8.1	19	<1	<2	<0.1	0.58	0.02	110
23-Dec-14	8.0	17	<1	<2	<0.1	0.54	0.02	320
23-Jan-15	7.7	31	<1	<2	<0.1	0.53	0.02	168
25-Feb-15	7.9	22	<1	<2	<0.1	0.56	0.02	36
31-Mar-15	8.0	18	<1	<2	<0.1	0.46	0.02	220
22-Apr-15	8.0	5	<1	<2	<0.1	0.42	0.01	190
20-May-15	8.0	12	<1	<2	<0.1	0.46	0.01	290
25-Jun-15	8.1	12	<1	<2	0.1	0.55	0.02	280
23-Jul-15	8.0	20	<1	<2	<0.1	1.33	0.06	110
27-Aug-15	7.5	129	<1	3	0.1	1.89	0.17	2100
24-Sep-15	8.1	7	<1	<2	<0.1	0.50	0.02	160
29-Oct-15	8.0	22	<1	<2	<0.1	0.61	0.02	112
30-Nov-15	7.8	23	<1	<2	<0.1	0.75	0.02	160
15-Dec-15	7.9	20	<1	<2	<0.1	0.75	0.02	166
20-Jan-16	8.0	20	<1	<2	<0.1	0.70	0.03	236
17-Feb-16	7.9	23	<1	<2	<0.1	0.68	0.02	330
22-Mar-16	8.0	13	<1	<2	<0.1	0.53	0.02	140
20-Apr-16	8.1	12	<1	<2	<0.1	0.51	0.02	220
30-May-16	7.8	3	<1	<2	<0.1	0.39	0.01	98
16-Jun-16	8.0	4	<1	<2	<0.1	1.17	0.02	174
19-Jul-16	7.8	39	<1	<2	<0.1	1.48	0.06	72
26-Aug-16	7.9	22	<1	<2	<0.1	1.19	0.04	164
21-Sep-16	7.8	57	<1	<2	<0.1	1.26	0.06	520
25-Oct-16	7.7	30	<1	<2	<0.1	1.16	0.05	170
23-Nov-16	7.9	20	<1	<2	<0.1	1.01	0.05	232
14-Dec-16	7.9	20	<1	<2	<0.1	0.85	0.04	32
25-Jan-17	7.8	23	<1	<1	<0.1	1.02	0.05	75
22-Feb-17	7.6	20	<1	<2	<0.1	0.99	0.04	144
23-Mar-17	7.9	15	<1	<2	0.2	0.95	0.06	620
27-Apr-17	7.9	16	<1	<2	<0.1	0.78	0.04	290
25-May-17	8.0	24	<1	<2	<0.1	0.66	0.05	430
28-Jun-17	8.0	8	<1	<2	<0.1	0.61	0.03	380
27-Jul-17	7.8	33	<1	<2	<0.1	0.82	0.05	130
25-Aug-17	7.9	27	<1	<2	<0.1	0.59	0.03	150
28-Sep-17	7.8	23	<1	<2	<0.1	0.81	0.04	80
19-Oct-17	7.9	22	<1	<2	<0.1	0.76	0.04	200
21-Nov-17	7.9	21	<1	<2	<0.1	0.72	0.03	330
14-Dec-17	7.9	50	<1	<2	<0.1	0.75	0.04	160
29-Jan-18	7.8	18	<1	<2	<0.1	0.78	0.03	230
21-Feb-18	8.1	19	<1	<2	<0.1	0.72	0.03	160
21-Mar-18	7.8	19	<1	<2	<0.1	0.80	0.03	180
26-Apr-18	7.9	12	<1	<2	0.1	0.63	0.02	420
30-May-18	7.9	12	<1	<2	0.1	0.58	0.02	120
26-Jun-18	7.9	9	<1	<2	0.1	0.57	0.03	282

30-Jul-18	8.0	6	<1	<2	0.1	0.43	0.02	356
29-Aug-18	7.9	30	<1	<2	0.1	0.62	0.03	60
26-Sep-18	8.0	22	<1	<2	0.2	0.57	0.03	90
29-Oct-18	8.0	17	<1	<2	0.2	0.60	0.02	200
27-Nov-19	7.9	13	<1	<2	0.1	0.59	0.02	250
19-Dec-19	7.6	77	<1	<2	0.1	0.90	0.08	810
18-Jan-19	7.6	63	<1	<2	0.1	0.67	0.06	50
24-Jan-19	7.9	57	<1	<2	0.1	0.71	0.06	60
26-Feb-19	7.9	50	<1	<2	0.1	0.71	0.06	94
19-Mar-19	8.0	33	<1	<2	0.1	0.59	0.04	92
9-Apr-19	8.0	52	<1	<2	0.1	0.83	0.08	184
6-May-19	7.9	70	<1	<2	0.1	0.83	0.05	258
11-Jun-19	7.9	19	<1	<2	0.1	0.62	0.03	90
9-Jul-19	8.0	12	<1	0	0.6	0.69	0.03	58
12-Aug-19	8.0	19	<1	<2	0.1	0.69	0.02	34
2-Sep-19	8.0	34	<1	<2	0.2	0.68	0.03	88
14-Oct-19	8.0	34	<1	<2	0.1	0.68	0.03	12
19-Nov-19	8.0	34	<1	0	0.1	0.64	0.03	224
2-Dec-19	8.0	33	<1	<2	0.1	0.69	0.05	274
6-Jan-20	8.1	36	<1	<2	0.1	0.70	0.04	211
10-Feb-20	7.9	14	<1	<2	0.1	0.67	0.02	500
16-Apr-20	7.6	111	<1	<2	<0.1	1.94	0.16	64
12-May-20	7.9	27	<1	<2	<0.1	1.11	0.05	36
3-Jun-20	8.1	16	<1	<2	<0.1	0.76	0.03	90
20-Jul-20	8.1	27	<1	<2	<0.1	0.75	0.04	78
17-Aug-20	7.7	78	<1	<2	<0.1	1.84	0.12	150
9-Sep-20	7.8	34	<1	<2	<0.1	0.98	0.07	179
13-Oct-20	8.1	25	<1	<2	<0.1	0.62	0.04	110
4-Nov-20	7.1	26	<1	<2	<0.1	1.53	0.09	236
15-Dec-20	7.9	67	<1	<2	<0.1	1.48	0.09	150
11-Jan-21	7.3	51	<1	<2	<0.1	1.32	0.09	46
17-Feb-21	7.9	72	<1	<2	<0.1	1.02	0.10	192
9-Mar-21	8.0	31	<1	<2	<0.1	1.09	0.07	112
7-Apr-21	8.0	37	<1	<2	<0.1	0.81	0.07	269
11-May-21	7.3	31	<1	<2	<0.1	0.85	0.06	496
7-Jun-21	7.4	9	<1	<2	<0.1	0.72	0.05	120
7-Jul-21	7.8	20	<1	<2	<0.1	1.21	0.07	156
9-Aug-21	7.1	30	<1	<2	<0.1	1.09	0.04	48
7-Sep-21				No Sample				
18-Oct-21	7.1	7	<1	<2	<0.1	1.14	0.06	220
9-Nov-21	7.6	212	<1	<2	<0.1	1.81	0.24	2840
7-Dec-21	7.3	32	<1	<2	<0.1	0.99	0.04	416
11-Jan-22	7.7	39	<1	<2	<0.1	0.98	0.05	600
8-Feb-22	7.7	28	<1	<2	<0.1	0.94	0.05	540
23-Mar-22	7.8	21	<1	<2	<0.1	1.09	0.09	180
12-Apr-22	7.9	19	<1	<2	<0.1	1.00	0.04	120
10-May-22	7.8	21	<1	<2	<0.1	0.84	0.05	510
21-Jun-22	8.0	23	<1	<2	<0.1	0.86	0.03	45
18-Jul-22	7.9	32	<1	<2	<0.1	1.03	0.04	60
3-Aug-22	8.0	25	<1	<2	<0.1	0.95	0.04	112
13-Sep-22	8.0	50	<1	<2	<0.1	1.07	0.06	238
11-Oct-22	7.9	24	<1	<2	<0.1	1.07	0.04	257
22-Nov-22	7.2	82	<1	<2	<0.1	1.97	0.07	260
14-Dec-22	8.0	30	<1	<2	<0.1	1.34	0.07	190
16-Jan-23	7.7	27	<1	<2	<0.1	0.91	0.06	155
15-Feb-23	8.0	25	<1	<2	<0.1	0.89	0.07	170

**Effluent (EPA monitoring point 5)**

Date	Suspended Solids	Total Oil & Grease	BOD	Total Nitrogen	Total Phosphorous	Faecal coliform
Unit of Measure	mg/L	mg/L	mg/L	mg/L	mg/L P	CFU p/100ml
<b>Current Load Limits</b>	<b>15</b>	<b>2</b>	<b>10</b>	<b>10</b>	<b>0.5</b>	<b>200</b>
16-Jan-13	5	<1	2	8.8	0.32	10
22-Feb-13	13	<1	4	3.9	0.35	120
21-Mar-13	9	<1	4	5.1	0.25	12
18-Apr-13	5	<1	3	4.8	0.26	120
17-May-13	8	<1	<2	10	0.89	240
26-Jun-13	3	<1	<2	6	0.18	8
18-Jul-13	4	<1	<2	4.7	0.2	2
15-Aug-13	4	<1	<2	4.5	0.19	6
19-Sep-13	7	<1	<2	4.2	0.31	0.03
17-Oct-13	5	<1	<2	4.4	0.36	960
21-Nov-13	4	<1	<2	3.9	0.31	10
18-Dec-13	2	<1	<2	4.9	0.18	740
23-Jan-14	7	<1	<2	4.8	0.28	14
20-Feb-14	4	<1	<2	5.3	0.17	6
21-Mar-14	5	<1	<2	4.7	0.26	730
17-Apr-14	<2	<1	<2	6.16	0.3	<2
15-May-14	4	<1	<2	4.54	0.4	<1
19-Jun-14	3	<1	<2	6.74	0.33	<1
19-Jul-14	3	<1	4	7.6	0.3	4
21-Aug-14	7	<1	3	4.71	0.24	<2
18-Sep-14	11	<1	3	6.95	0.57	<2
23-Oct-14	7	<2	<2	5.22	0.44	<2
28-Nov-14	4	<1	<2	4.1	0.31	<2
23-Dec-14	<2	<1	<2	3.84	0.23	12
23-Jan-15	3	<1	<2	4.45	0.23	<2
25-Feb-15	5	<1	<2	3.93	0.33	90
31-Mar-15	6	<1	<2	4.76	0.33	16
22-Apr-15	2	<1	<2	5.98	0.08	<2
20-May-15	<2	<1	<2	8.8	0.25	<2
25-Jun-15	2	<1	<2	5.11	0.31	2
23-Jul-15	<2	<1	<2	4.38	0.28	<2
27-Aug-15	2	<1	<2	8.01	0.24	<2
24-Sep-15	2	<1	<2	4.99	0.2	8
29-Oct-15	2	<1	<2	4.5	0.18	<2
30-Nov-15	4	<1	<2	3.9	0.54	<2
15-Dec-15	3	<1	<2	4.41	0.27	4
20-Jan-16	4	<1	<2	4.61	0.25	2
17-Feb-16	3	<1	<2	5.45	0.36	10
22-Mar-16	5	<1	<2	4.92	0.21	6
20-Apr-16	7	<1	2	5.26	0.32	2
30-May-16	4	<1	<2	5.46	0.28	<2
16-Jun-16	<2	<1	<2	5.4	0.26	<2
19-Jul-16	<2	<1	<2	4.73	0.3	<1
26-Aug-16	<2	<1	<2	4.34	0.13	2
21-Sep-16	5	<1	<2	4.49	0.73	62
25-Oct-16	<2	<1	<2	4.17	0.41	2
23-Nov-16	2	<1	<2	3.84	0.24	4
14-Dec-16	4	<1	<2	3.43	0.17	2

25-Jan-17	7	<1	<2	3.93	0.28	104
22-Feb-17	10	<1	2	3.94	0.16	14
23-Mar-17	2	<1	<2	3.62	0.21	19
27-Apr-17	5	<1	<2	4.2	0.17	2
25-May-17	5	<1	16	4.28	0.17	60
15-Jun-17	0.3	<1	<2	4.58	0.18	2
28-Jun-17	3	<1	<2	4.36	0.18	<2
27-Jul-17	5	<1	<2	4.15	0.18	2
25-Aug-17	4	<1	2	4.25	0.21	<2
28-Sep-17	5	<1	<2	4.85	0.19	<2
19-Oct-17	10	<1	2	4.5	0.35	62
28-Nov-17	18	<1	4	3.34	0.2	2
14-Dec-17	6	<1	8	3.65	0.28	28
29-Jan-18	7	<1	<2	5.07	0.52	2
21-Feb-18	4	<1	<2	4.27	0.33	<2
21-Mar-18	8	<1	<2	5.89	0.36	34
26-Apr-18	2	<1	<2	5.15	0.17	6
30-May-18	2	1	<2	4.77	0.18	<2
26-Jun-18	2	<1	<2	5.38	0.2	<2
30-Jul-18	2	<1	<2	4.53	0.16	<2
29-Aug-18	4	<1	2	4.3	0.25	4
26-Sep-18	7	<1	3	3.8	0.38	638
29-Oct-18	7	<1	<2	4.68	0.32	8
27-Nov-18	7	<1	3	4.8	0.37	200
19-Dec-19	5	<1	3	3.9	0.3	1920
18-Jan-19	21	<1	7	16.6	1.19	29000
24-Jan-19	3	<1	<2	5.25	0.2	<10
26-Feb-19	5	<2	<2	4.15	0.29	6
19-Mar-19	6	<1	<2	5.98	0.44	182
9-Apr-19	2	<1	<2	4.99	0.20	<2
6-May-19	<2	<1	<2	5.22	0.25	<2
11-Jun-19	4	<1	<2	5.13	0.17	<2
9-Jul-19	3	<1	<2	4.80	0.16	8
12-Aug-19	3	<1	2	6.84	0.29	164
2-Sep-19	5	>1	4	5.56	0.29	240
14-Oct-19	3	<1	<2	4.70	0.19	12
19-Nov-19	7	<1	4	4.19	0.32	48
2-Dec-20	9	<1	3	4.69	0.30	136
6-Jan-20	15	<1	<2	0.70	0.31	14
10-Feb-20	3	<1	<2	6.05	1.96	10
23-Mar-20	5	<1	<2	6.03	0.08	4
15-Apr-20	5	<1	<2	4.68	0.12	<2
12-May-20	2	<1	<2	4.02	0.10	<2
3-Jun-20	2	<1	<2	4.41	0.06	<2
20-Jul-20	2	<1	<2	4.51	0.11	8
17-Aug-20	4	<1	<2	3.17	0.14	<2
9-Sep-20	4	<1	<2	3.58	0.42	50
13-Oct-20	6	<1	<2	3.74	0.34	34
4-Nov-20	4	<1	<2	3.31	0.29	210
15-Dec-21	3	<1	<2	3.55	0.65	18
11-Jan-21	4	<1	3	3.62	0.64	2
17-Feb-21	6	<1	2	4.22	0.66	30
9-Mar-21	13	<1	<2	3.59	0.25	226
7-Apr-21	4	<1	<2	2.27	0.07	62
11-May-21	3	<1	<2	3.05	0.14	112
7-Jun-21	2	<1	<2	4.23	0.37	75
7-Jul-21	<2	<1	<2	3.87	0.18	92
9-Aug-21	<2	<1	<2	4.21	0.42	6
7-Sep-21	3	<1	<2	4.13	0.42	2
18-Oct-21	2	<1	<2	2.70	0.51	<2
9-Nov-21	5	<1	<2	2.81	0.41	12
7-Dec-21	4	<1	<2	2.70	0.17	6
11-Jan-22	4	<1	<2	0.76	0.49	50
8-Feb-22	6	<1	<2	4.35	0.42	2
23-Mar-22	13	<1	3	4.75	0.37	66
12-Apr-22	4	<1	<2	6.14	0.62	16
10-May-22	3	<1	<2	4.07	0.61	9000
21-Jun-22	6	<1	<2	4.57	0.37	44
18-Jul-22	2	<1	<2	4.62	0.36	8700
3-Aug-22	2	<1	<2	3.86	0.24	12
13-Sep-22	3	<1	<2	2.93	0.33	<2
11-Oct-22	3	<1	<2	3.22	0.40	14
22-Nov-22	3	<1	<2	6.88	0.26	16
14-Dec-22	5	<1	2	5.91	0.23	24
16-Jan-23	4	<1	3	3.84	0.32	2
15-Feb-23	4	<1	<2	3.66	0.26	<2

**Notes** - High phosphorous reading for Sept 2016 due to high infiltration flow of up to 5 ML per day during the wet period  
High phosphorous reading for Nov 15 due to dosing pump failure. Issue rectified currently reading 0.24, 8 Dec 15

Note: exceedances from monitoring point 5 is as follows:

- 19 December 2019
  - Faecal Coliforms 1920 CFU/100mL
- 18 January 2019
  - Faecal Coliforms 29000 CFU/100mL
  - Suspended Solids 21 mg/L
  - Nitrogen Total 16.6 mg/L N
  - Phosphorous Total 1.19 mg/ L P

Council has been investigating the causes of these exceedances and it appears to be an operational and a maintenance issue in conjunction with delayed testing of samples due to the holiday period.

2019-2020 reporting period Exceedence for monitoring data is as follows

- 2 September 2019 • Faecal Coliforms 240 CFU/100mL
- 6 January 2020 • Suspended Solids 15 mg/L - onlimit
- 10 February • Phosphorous Total 1.96 mg/ L P

Council has been investigating the causes of these exceedances for Faecal Coliforms and it appears to be an operational and a maintenance issue with the wrong lable on sampling bottle. The Suspended solids was on limit and the Phosphrous because of an operational and maintance issue.

2020-2023 reporting period Exceedence for monitoring data is as follows

- 10 May 2022 Phosphorous Total 0.61 mg/L P
- 12 April 2022 Phosphorous Total 0.62 mg/L P
- 18 October 2021 •Phosphorous Total 0.51 mg/L P
- 17 February 2021 •Phosphorous Total 0.66 mg/ L P
- 11 January 2021 •Phosphorous Total 0.64 mg/ L P
- 15 December 2020 •Phosphorous Total 0.65 mg/ L P
- 4 November 2020 • Faecal Coliforms 210 CFU/100mL

Downstream (EPA monitoring point 4)

Lachlan River 150 downstream of discharge point indicated as Monitoring Location 4 [ x:654291 y:62569 on map ]

Date	pH	Suspended Solids	Total Oil & Grease	BOD	Ammonia	Total Nitrogen	Total Phosphorous	Faecal Coliforms
Unit of Measure	pH	mg/L	mg/L	mg/L	mg/L N	mg/L	mg/L P	CFU p/100ml
16-Jan-13	7.60	16	<1	<2	<0.1	0.86	0.04	0
22-Feb-13	7.80	15	<1	<2	<0.1	0.83	0.03	0
21-Mar-13	7.70	16	<1	<2	<0.1	0.89	0.03	380
18-Apr-13	7.60	23	<1	<2	<0.1	0.89	0.04	480
16-May-13	7.70	12	<1	<2	<0.1	0.78	0.03	110
21-Jun-13	7.80	10	<1	<2	<0.1	0.62	0.03	100
18-Jul-13	7.90	16	<1	<2	<0.1	0.53	0.05	320
15-Aug-13	8.00	5	<1	<2	<0.1	0.42	0.02	250
19-Sep-13	7.80	24	<1	<2	<0.1	0.67	0.03	140
17-Oct-13	7.80	23	<1	<2	<0.1	0.61	0.03	100
21-Nov-13	7.80	12	<1	<2	<0.1	0.56	0.02	130
18-Dec-13	7.90	13	<1	<2	<0.1	0.57	0.01	122
23-Jan-14	7.71	16	<1	<2	<0.1	0.58	0.02	116
20-Feb-14	7.80	20	<1	<2	<0.1	0.58	0.02	2080
21-Mar-14	8.00	14	<1	<2	<0.1	0.55	0.03	70
17-Apr-14	8.06	11	<1	<2	<0.1	0.59	0.03	13
15-May-14	7.77	30	<1	<2	<0.1	0.46	0.02	360
19-Jun-14	8.02	4	<1	<2	<0.1	0.33	0.01	200
19-Jul-14	8.01	15	<1	<2	<0.1	0.41	0.03	158
21-Aug-14	7.84	109	<1	3	<0.1	1.55	0.16	4200
18-Sep-14	7.86	23	<1	<2	<0.1	0.63	0.03	193
23-Oct-14	7.84	23	<1	<2	<0.2	0.60	0.02	160
28-Nov-14	8.08	22	<1	<2	<0.1	0.59	0.02	76
23-Dec-14	7.91	13	<1	<2	<0.1	0.54	0.02	300
23-Jan-15	7.77	26	<1	<2	<0.1	0.52	0.02	150
25-Feb-15	7.92	27	<1	<2	<0.1	0.55	0.03	28
31-Mar-15	7.94	14	<1	<2	<0.1	0.47	0.02	280
22-Apr-15	8.02	4	<1	<2	<0.1	0.43	0.01	360
20-May-15	7.97	9	<1	<2	<0.1	0.44	0.01	400
25-Jun-15	8.23	12	<1	<2	<0.1	0.55	0.02	210
23-Jul-15	8.06	26	<1	<2	<0.1	1.29	0.06	150
27-Aug-15	7.65	213	<1	4	<0.1	2.07	0.22	1800
24-Sep-15	8.02	5	<1	<2	<0.1	0.51	0.03	160
29-Oct-15	8.00	14	<1	<2	<0.1	0.60	0.02	138
30-Nov-15	7.88	17	<1	<2	<0.1	0.76	0.02	258
15-Dec-15	7.88	16	<1	<2	<0.1	0.76	0.02	156
20-Jan-16	7.95	20	<1	<2	<0.1	0.70	0.03	150
17-Feb-16	7.93	18	<1	<2	<0.1	0.68	0.02	340
22-Mar-16	7.96	10	<1	<2	<0.1	0.52	0.02	90
20-Apr-16	8.11	8	<1	<2	<0.1	0.49	0.02	230
30-May-16	7.75	4	<1	<2	<0.1	0.40	0.01	110
16-Jun-16	8.02	4	<1	<2	<0.1	1.17	0.02	176
19-Jul-16	7.81	40	<1	<2	<0.1	1.57	0.07	100
26-Aug-16	7.88	23	<1	<2	<0.1	1.19	0.04	112
21-Sep-16	7.76	50	<1	<2	<0.1	1.26	0.06	280
25-Oct-16	7.64	32	<1	<2	<0.1	1.13	0.05	178
23-Nov-16	7.95	17	<1	<2	<0.1	1.01	0.05	190
14-Dec-16	8.00	19	<1	<2	<0.1	0.86	0.04	40
25-Jan-17	7.83	20	<1	<2	<0.1	1.00	0.04	140
22-Feb-17	7.67	16	<1	2	<0.1	0.99	0.04	194
23-Mar-17	7.92	57	<1	<2	0.1	1.74	0.11	290
27-Apr-17	7.93	48	<1	<2	0.2	2.80	0.12	290
25-May-17	8.00	33	<1	<2	<0.1	0.69	0.05	340
28-Jun-17	8.03	9	<1	<2	<0.1	0.64	0.03	510
27-Jul-17	7.86	34	<1	<2	<0.1	0.90	0.05	160
25-Aug-17	7.90	18	<1	4	<0.1	2.46	0.12	590
28-Sep-17	7.87	26	<1	<2	<0.1	1.94	0.09	80
19-Oct-17	7.93	19	<1	<2	<0.1	0.75	0.04	110
28-Nov-17	7.89	21	<1	<2	<0.1	0.76	0.03	240
14-Dec-17	7.89	58	<1	<2	<0.1	0.75	0.04	350
29-Jan-18	7.82	27	<1	<2	<0.1	1.77	0.14	100
21-Feb-18	7.79	16	<1	<2	<0.1	0.71	0.03	100
21-Mar-18	7.92	38	<1	<2	<0.1	2.88	0.16	580
26-Apr-18	7.91	28	<1	<2	0.1	2.25	0.07	190
30-May-18	7.92	43	<1	20	<0.1	6.95	4.18	40
26-Jun-18	7.86	10	<1	<2	<0.1	0.59	0.04	308
30-Jul-18	7.97	6	<1	<2	<0.1	0.46	0.02	498
29-Aug-18	7.85	21	<1	<2	0.1	0.77	0.04	60
26-Sep-18	7.97	20	<1	<2	0.2	0.56	0.02	76
29-Oct-18	7.88	16	<1	<2	0.1	0.59	0.02	146
27-Nov-19	7.85	10	<1	3	0.2	2.63	0.20	98
19-Dec-19	7.92	68	<1	<2	<0.1	1.55	0.13	780
18-Jan-19	7.55	7	<1	<2	<0.1	1.03	0.12	160
24-Jan-19	7.96	72	<1	<2	0.2	1.02	0.07	4
26-Feb-19	7.96	33	<1	6	<0.1	0.74	0.07	80
19-Mar-19	7.99	36	<1	<2	<0.1	0.53	0.03	70
9-Apr-19	8.00	52	<1	<2	<0.1	0.80	0.08	72
6-May-19	7.84	65	<1	<2	<0.1	0.83	0.05	194
11-Jun-19	7.91	13	<1	<2	<0.1	0.60	0.02	100
9-Jul-19	7.98	15	0.00	0.00	<0.1	0.66	0.02	96
12-Aug-19	7.91	16	<1	<2	<0.1	0.66	0.02	104
2-Sep-19	8.00	18	<1	2.00	0.20	3.95	0.17	74
14-Oct-19	7.88	9	<1	2.00	0.40	4.18	0.16	38
19-Nov-19	7.94	16	0.00	0.00	<0.1	0.62	0.02	228
2-Dec-19	8.01	35	<1	<2	<0.1	0.70	0.04	296
6-Jan-20	8.07	19	<1	<2	<0.1	0.65	0.03	270
10-Feb-20	7.89	10	<1	<2	<0.1	0.64	0.02	318
16-Apr-20	7.67	210	<1	3.00	<0.1	245	0.24	480
12-May-20	8.00	17	<1	<2	<0.1	1.09	0.05	20
3-Jun-20	8.08	15	<1	<2	<0.1	0.74	0.02	224
20-Jul-20	8.09	50	<1	2.00	<0.1	0.79	0.04	138
17-Aug-20	7.88	88	<1	<2	<0.1	1.64	0.07	190
9-Sep-20	8.03	21	<	<2	<0.1	1.00	0.06	350
13-Oct-20	8.11	31	<1	<2	<0.1	0.56	0.03	190
4-Nov-20	7.64	54	<1	<2	<0.1	1.52	0.08	200
15-Dec-21	7.75	77	<1	<2	<0.1	1.46	0.09	224
11-Jan-21	7.36	51	<1	<2	<0.1	1.27	0.09	60
17-Feb-21	7.96	65	<1	<2	<0.1	1.01	0.09	432

9-Mar-21	8.02	46	<1	<2	<0.1	1.12	0.08	120
7-Apr-21	8.22	38	<1	<2	0.20	0.78	0.08	326
11-May-21	7.74	26	<1	<2	<0.1	0.85	0.05	720
7-Jun-21	7.66	8	<1	<2	<0.1	0.60	0.04	68
7-Jul-21	7.78	19	<1	<2	<0.1	1.23	0.06	136
9-Aug-21	7.73	29	<1	<2	<0.1	1.07	0.05	30
7-Sep-21					No Sample			
18-Oct-21	7.45	40	<1	<2	<0.1	1.12	0.06	220
9-Nov-21	7.78	219	<1	3.00	<0.1	1.69	0.22	2760
7-Dec-21	6.97	30	<1	<2	<0.1	0.98	0.04	210
11-Jan-22	6.55	43	<1	<2	<0.1	0.98	0.05	510
8-Feb-22	7.70	21	<1	<2	<0.1	0.96	0.04	100
23-Mar-22	7.84	36	<1	<2	<0.1	0.98	0.04	230
12-Apr-22	7.93	18	<1	<2	<0.1	0.98	0.04	430
10-May-22	7.81	24	<1	<2	<0.1	0.77	0.44	144
21-Jun-22	8.01	25	<1	<2	<0.1	0.90	0.03	56
18-Jul-22	7.92	34	<1	<2	<0.1	0.95	0.04	110
3-Aug-22	8.07	25	<1	<2	<0.1	0.97	0.04	112
13-Sep-22	8.02	44	<1	<2	<0.1	1.07	0.05	254
11-Oct-22	7.92	20	<1	<2	<0.1	0.99	0.04	150
22-Nov-22	7.31	113	<1	<2	<0.1	1.65	0.10	280
14-Dec-22	7.94	30	<1	<2	<0.1	1.32	0.06	60
16-Jan-23	7.65	28	<1	<2	<0.1	0.96	0.07	150
15-Feb-23	8.04	3	<1	<2	<0.1	0.88	0.06	180

