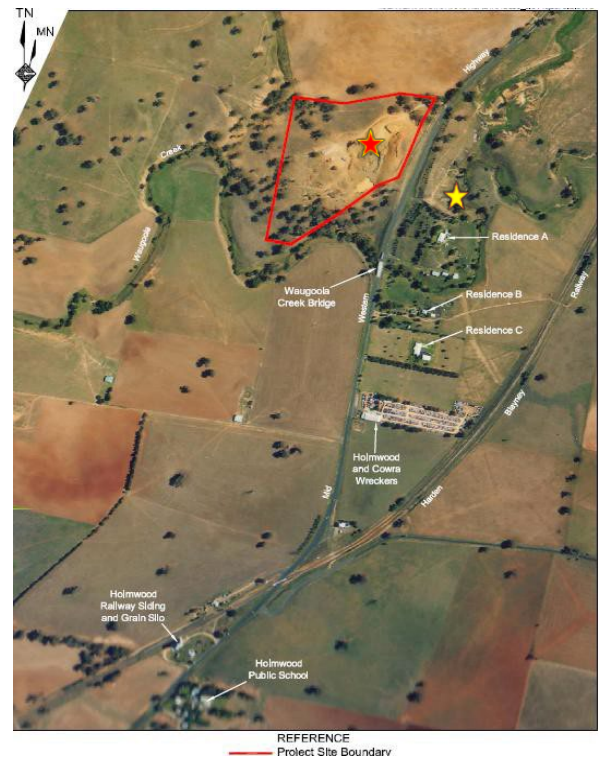


HOLMWOOD QUARRY

Analytical results

EPA License Number	12933
Link to Licence	https://apps.epa.nsw.gov.au/prpoeoapp/View/POEOLicence.aspx?DOCID=174579&SYSUIID=1&LICID=12933
	See link above for full licence details
Licensee Name	Cowra Shire Council
Licensee Address	Private Bag 342, Cowra NSW 2794
Location of Monitoring Point	HOLMWOOD QUARRY Mid Western Hwy Cowra NSW 2794 LOT 146 DP 750377
Scheduled Activity	Extractive Activities Land based extractive activities
Scale	> 30000-50000 T extracted, processed or stored
Unit/s of Measure	Listed below
Monitoring points	Listed below, also see map
Date Published	29/09/2023
Date Obtained	11/10/2022
Frequency of Monitoring	Daily during discharge Point 1, Monthly during discharge Point 2
Link to Latest Weather Observations for Cowra	http://www.bom.gov.au/products/IDN60801/IDN60801.95721.shtml



Testing Results



HOLMWOOD DAM – Point 1 – Point identified as Sediment Control Dam

Sample Date	pH	Suspended Solids	Total Oil & Grease	Discharge Date
<i>Unit of Measure</i>	<i>pH</i>	<i>mg/L</i>	<i>mg/L</i>	
3-Dec-13	8.16	13	<1	16-Dec-13
12- Mar-14	8.61	13	<1	No Discharge
1-Oct-14	9.19	7	<1	14-Oct-14
15-Dec-15	8.35	13	<1	16-Dec-15
17-Jun-16	7.82	70	<1	No Discharge
1-Jul-16	7.6	52	<1	No Discharge
5-March -19	7.64	8	<1	No Discharge
11 August 2020	8.34	11	No required on Licence as from 18 November 2019	13 August 2020
26 April 2021	7.67	9	NA	29 April 2021
25 May 2022	8.01	6	NA	27 May 2022
13 December 2022	8.89	57	NA	No Discharge
Concentration Limits	6.5-8.5	50		

HOLMWOOD QUARRY

Analytical results

Note: that Dust sampling is no longer required for this licence – Variation to Licence 12 January 2017



HOLMWOOD DAM –Point 2 – Point identified as “Residence A” [Dust monitoring, particles-deposited matter grams per m2 per month]

Sample Date	Insoluble Solids g/m2/mth	Ash g/m2/mth	Combustible Matter g/m2/mth
30-Mar-15	0.7	0.49	0.21
15-Apr-15	2.4	1.5	0.9
14-May-15	1.6	1	0.6
17-Jun-15	0.8	0.55	0.25
17-Jul-15	0.2	0.11	<0.2
19-Aug-15	0.2	0.12	<0.2
17-Sep-15	0.5	0.26	0.24
16-Oct-15	0.5	0.14	0.36
13-Nov-15	1	0.6	0.4
1-Dec-15	0.9	0.54	0.36
4-Jan-16	5.3	2.71	2.59
19-Feb-16	2	1.55	0.45
23-Mar-16	1.1	0.79	0.31
4-Apr-16	2.3	1.81	0.49
30-May-16	2.4	1.95	0.45
5-Jul-16	2.4	1.3	1.1
21-Jul-16	1.4	0.5	0.9
5-Aug-16	0.4	0.25	<0.20
5-Sept-16	0.9	0.53	0.37
7-Oct-16	1.6	0.90	0.70
10-Nov-16	1.1	0.59	0.51
5 – Dec- 16	1.7	0.92	0.78

- ↳ Insoluble Solids
 - ↳ Ash content [our concern]
 - ↳ Combustible matter

Note: The nitrogenous part of soluble solids is bird droppings – not our concern.
Note: Combustible matter is organic matter such as bird droppings, insects, leaves etc – not our concern.

Concentration Limits		4.0g/m2/mth	
----------------------	--	-------------	--

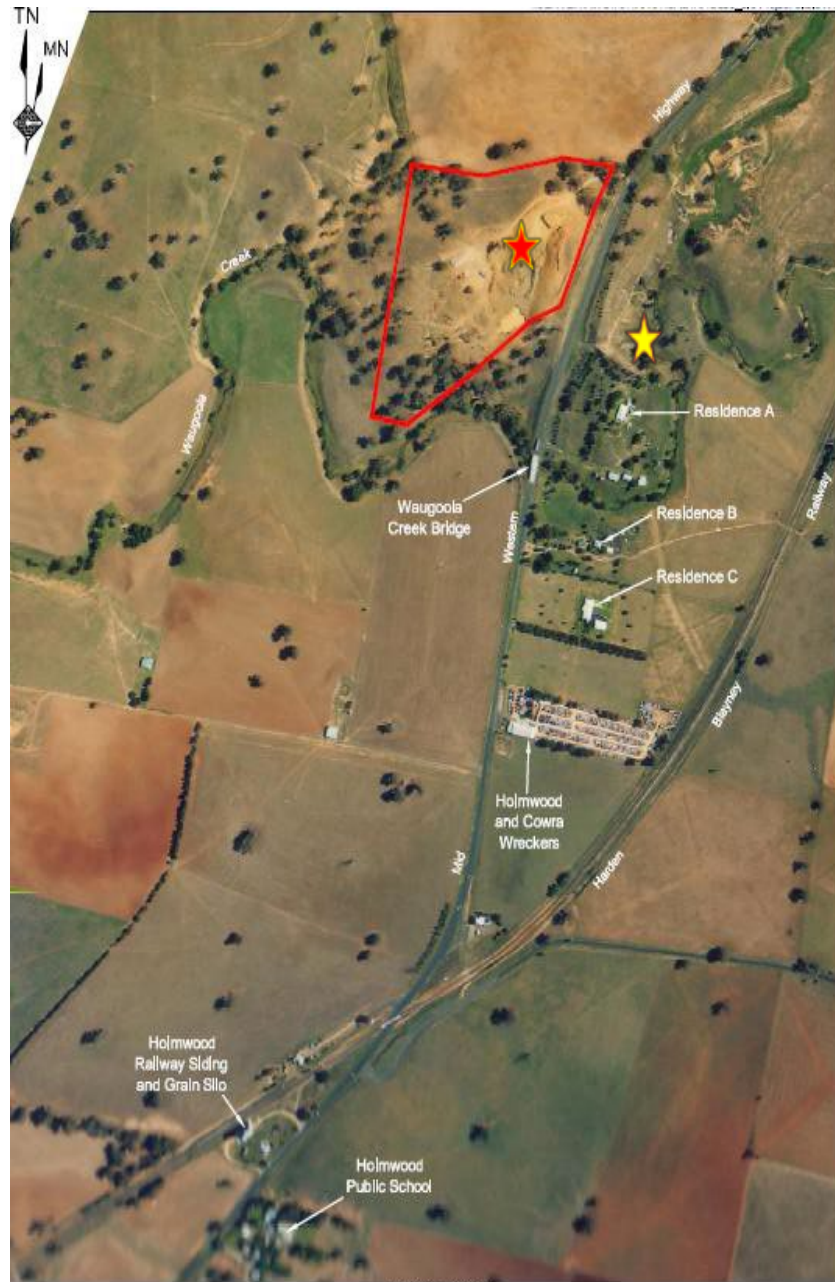
Important information

Tests results at point 2 are collected in a dust bottle receptacle. Collection includes solids and water from rainwater. The analysis for solids are as follows; **Total Solids** ↳ Soluble Solids

HOLMWOOD QUARRY

Analytical results

Note: that Dust sampling is no longer required for this licence – Variation to Licence 12 January 2017



REFERENCE
— Project Site Boundary